

# Neuroendocrine tumors

CHI Formulary Treatment algorithm

Treatment algorithm-November  
2023

Supporting treatment algorithms  
for the clinical management of  
neuroendocrine tumors

Figures 1 to 5 outline a comprehensive treatment algorithm on **the management of neuroendocrine tumors** aimed at addressing the different lines of treatment after thorough review of medical and economic evidence by CHI committees.

For further evidence, please refer to CHI **Neuroendocrine tumors** full report. You can stay updated on the upcoming changes to our formulary by visiting our website at <https://chi.gov.sa/AboutCCHI/CCHIprograms/Pages/IDF.aspx>

Our treatment algorithm offers a robust framework for enhancing patient care and optimizing treatment outcomes across a range of treatment options, holding great promise for improving healthcare delivery.

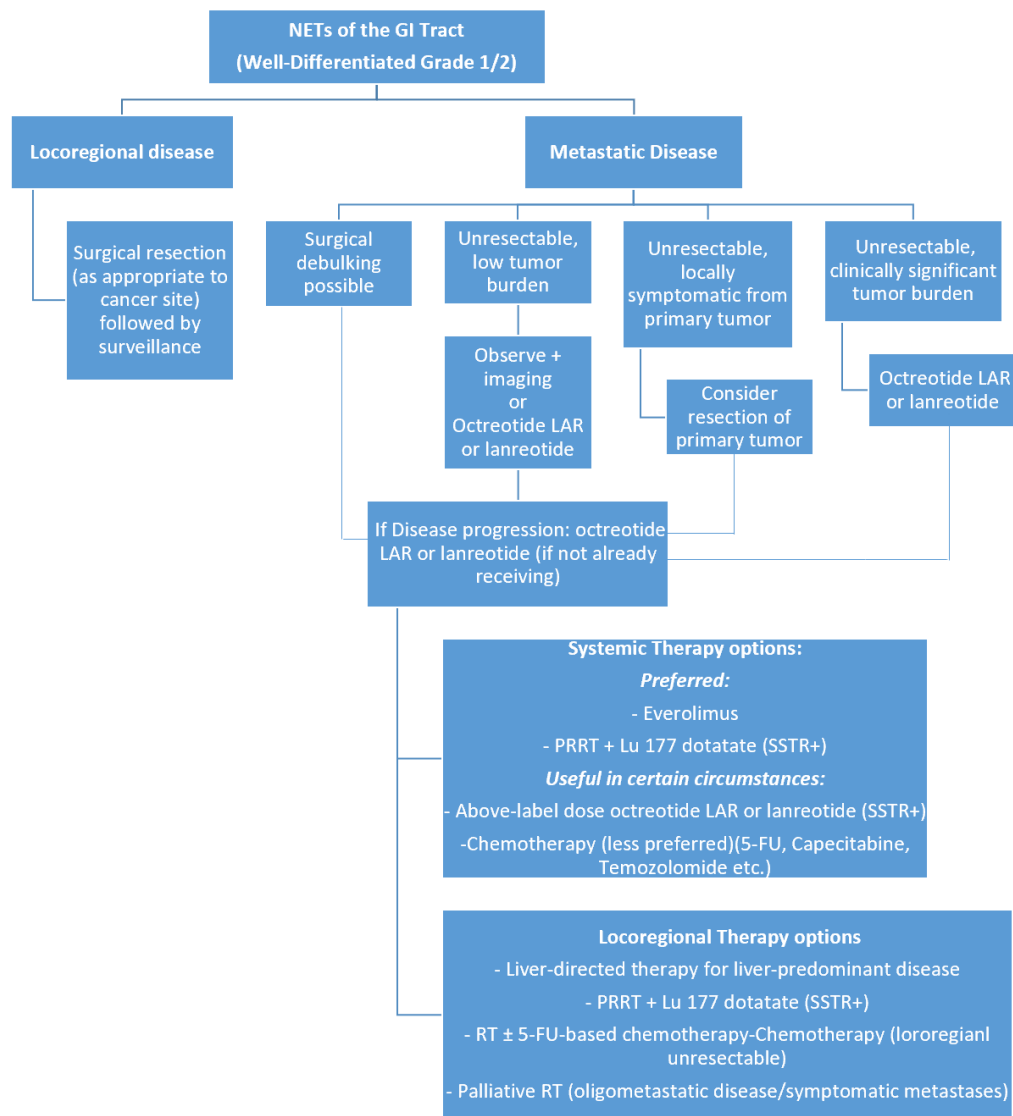


Figure 1: Management of NETs of the GI tract

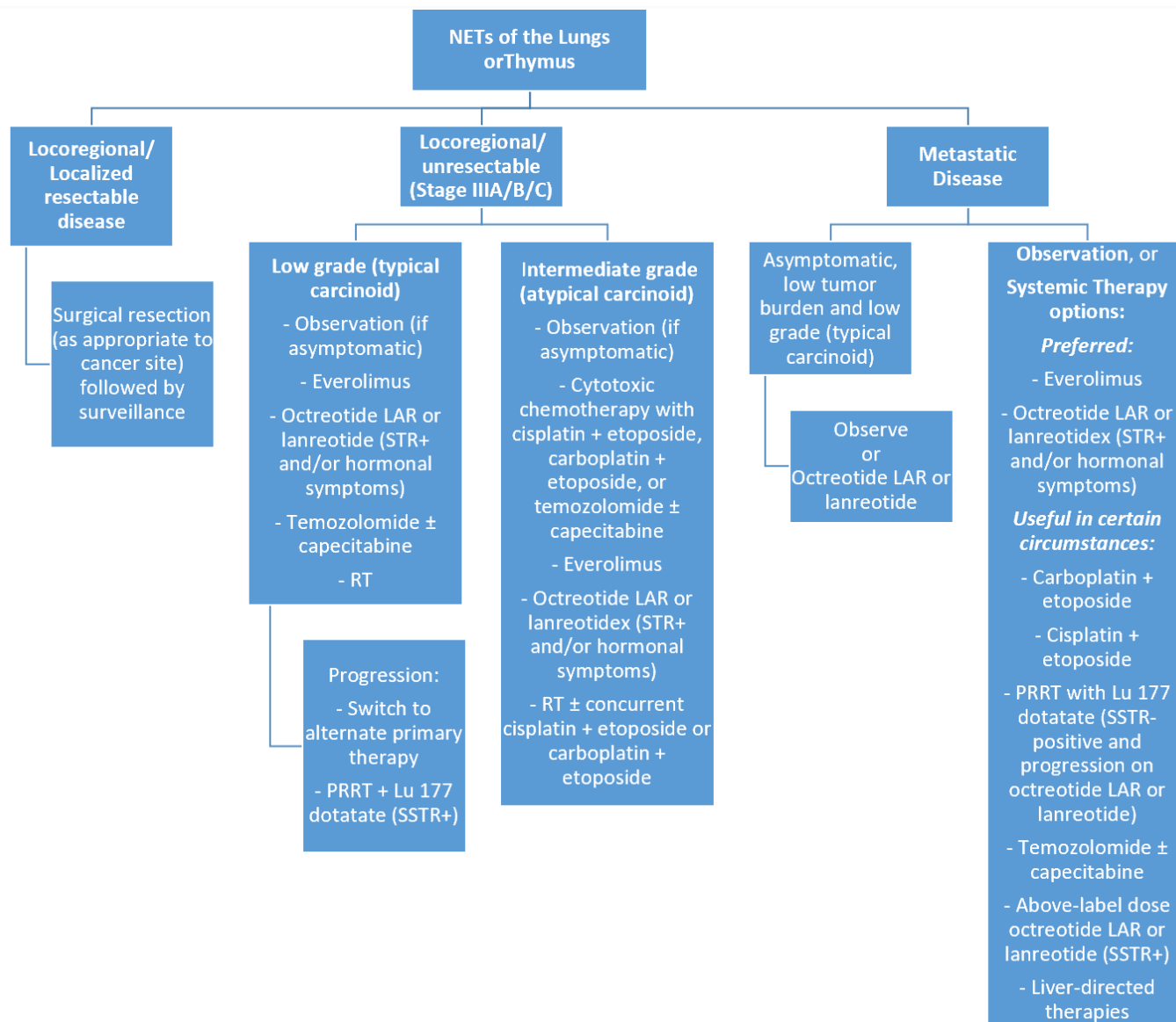


Figure 2: Management of NETs of lungs or thymus

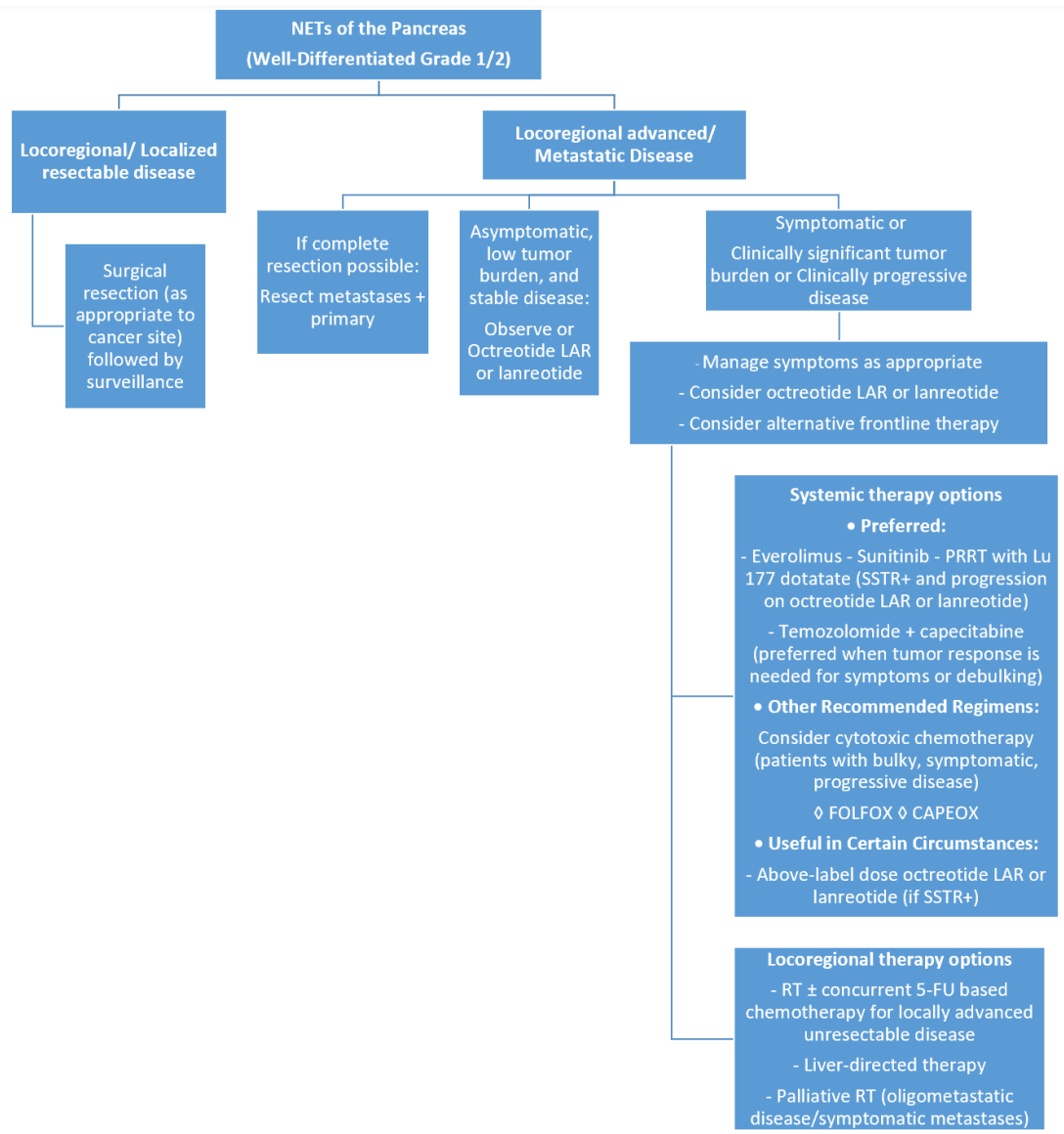


Figure 3: Management of NETs of the pancreas

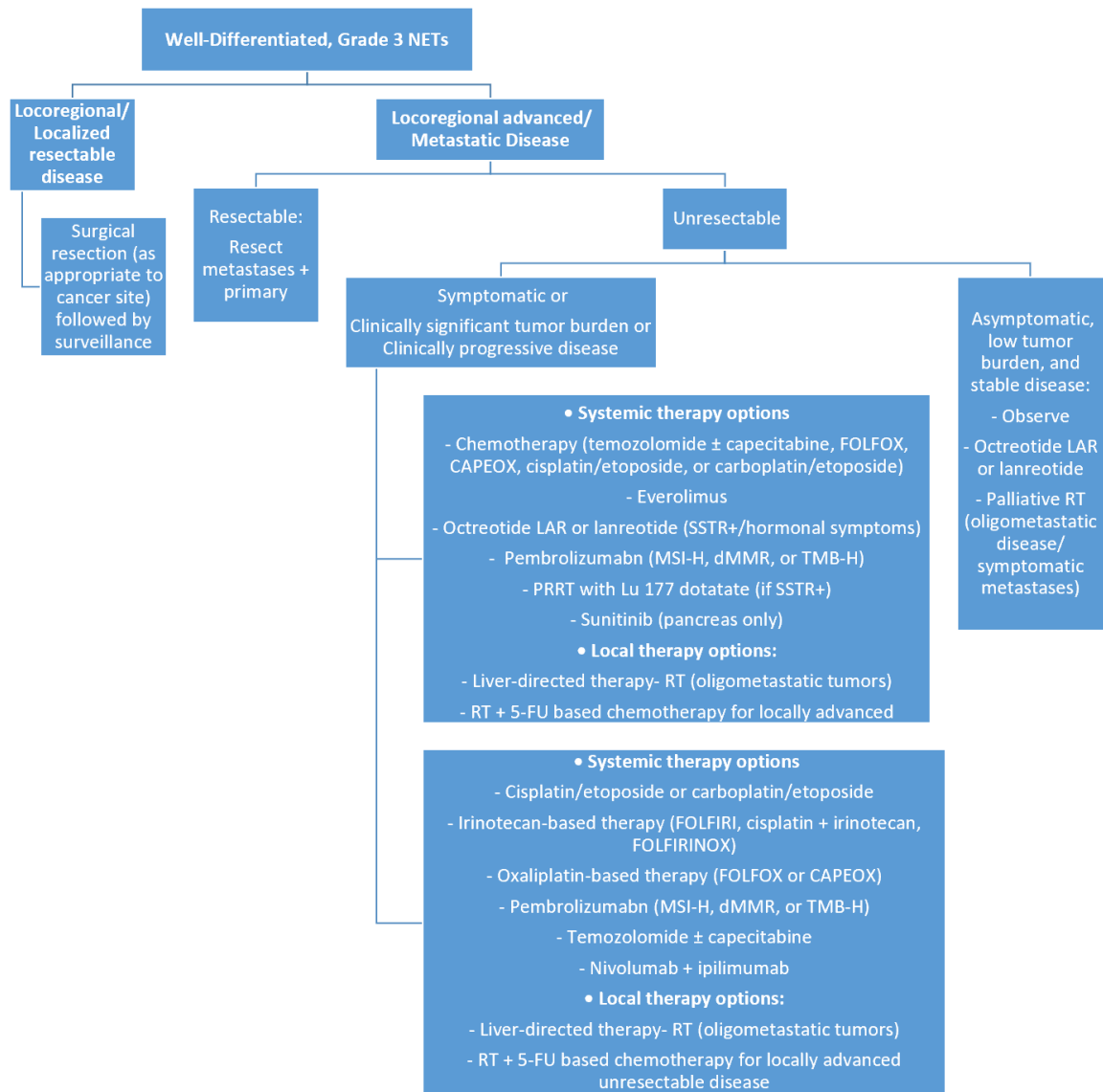


Figure 4: Management of well-differentiated, Grade 3 NETs

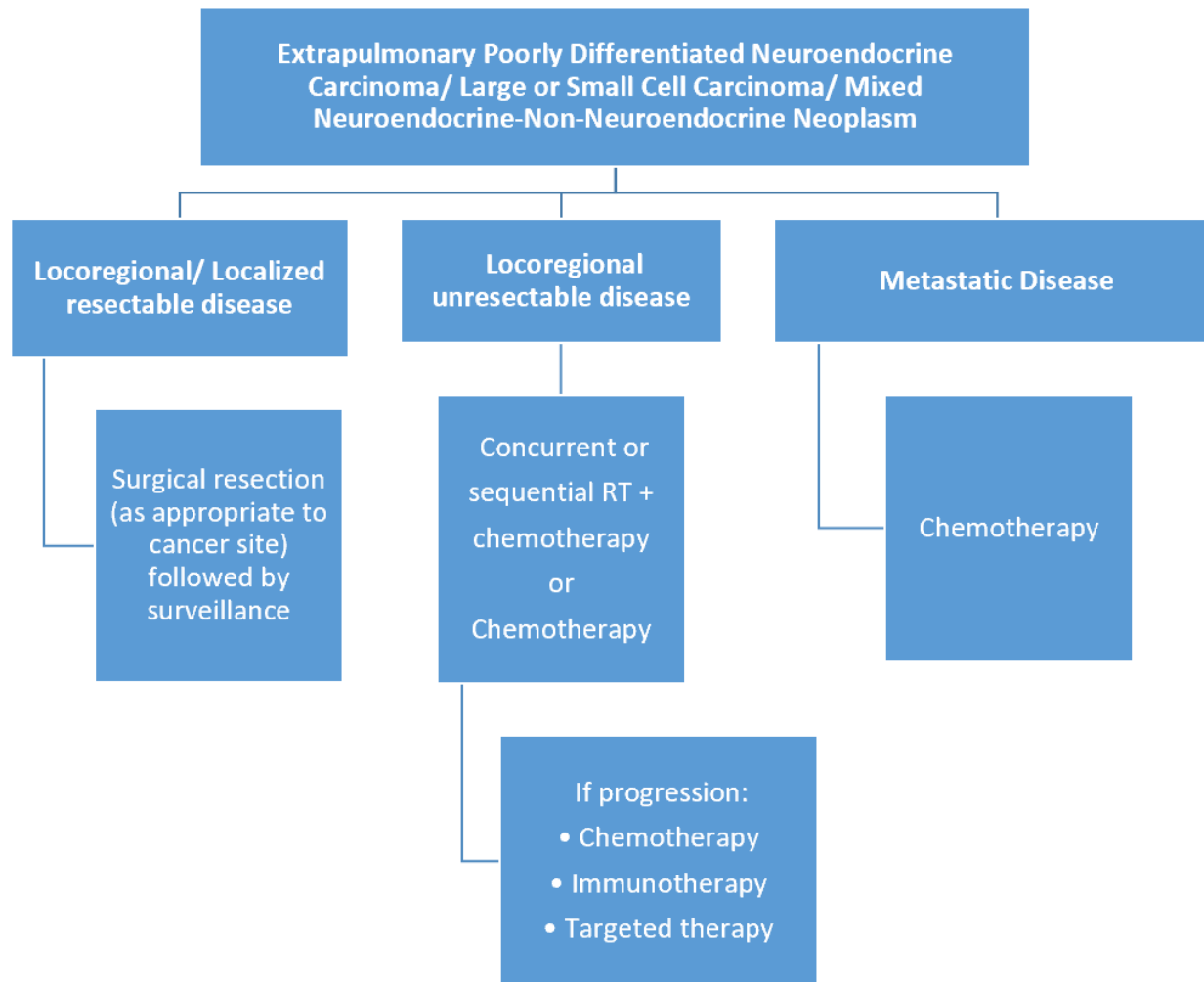


Figure 5: Management of Extrapulmonary Poorly Differentiated Neuroendocrine Carcinoma/Large or Small Cell Carcinoma/Mixed Neuroendocrine-Non-Neuroendocrine Neoplasm